

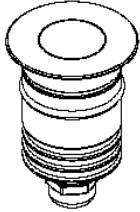
IG-40-30Q



InGround LED Spot



Inground LED spot



- ✔ 2W Max
- ✔ IP67 for wet locations
- ✔ 50,000 hour lifetime
- ✔ CNC processed Aluminum housing
- ✔ 200Kg walkover
- ✔ Installation accessories supplied



SPECIFICATIONS

Power	1 LED x 1W (350mA) 1 LED x 2W (500mA)
Light Color	White: Warm, Neutral, Cool Color: Red, Green, Blue, Amber
White light CCT	3,000K 4,000K 6,000K
Lumen Output ¹	140lm 140lm 160lm - 1W 180lm 180lm 210lm - 2W
White light CRI ²	≥80 - Standard ≥90
Beam	5°, 15°, 25°, 45°, Wide (frosted)
Optics	20mm Optics Clear or frosted cover

Dimensions	40mm x 40mm
Installation cut off	Ø31mm (without concrete box)
Height	51mm (without cable)
Weight	70g

Housing	Aluminum, tempered crystal glass cover
Housing color	Natural anodize coating
IP Rating	Wet locations - IP67
Operating Temp.	-20°C to 40°C
Cable	50cm Neoprene cable - Standard
Connectors	Open Wires
Accessories	B-30 - Concrete box (Ø35mm x 80mm)

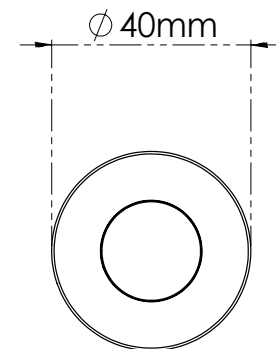
Extras	
Accessories	S-30 wood / plaster installation spring (12mm)
Cable	Custom cable length up to 50m
Power Supply	Constant Current
Control	On/Off 0-10V Triac DMX DALI

Notes:

- 1 LEDs have ±10% output tolerance in accordance to manufacturer specifications
- 2 CRI 90 version is available upon request only
- 3 Extras are not supplied by default and priced separately

DRAWINGS

TOP



SIDE

