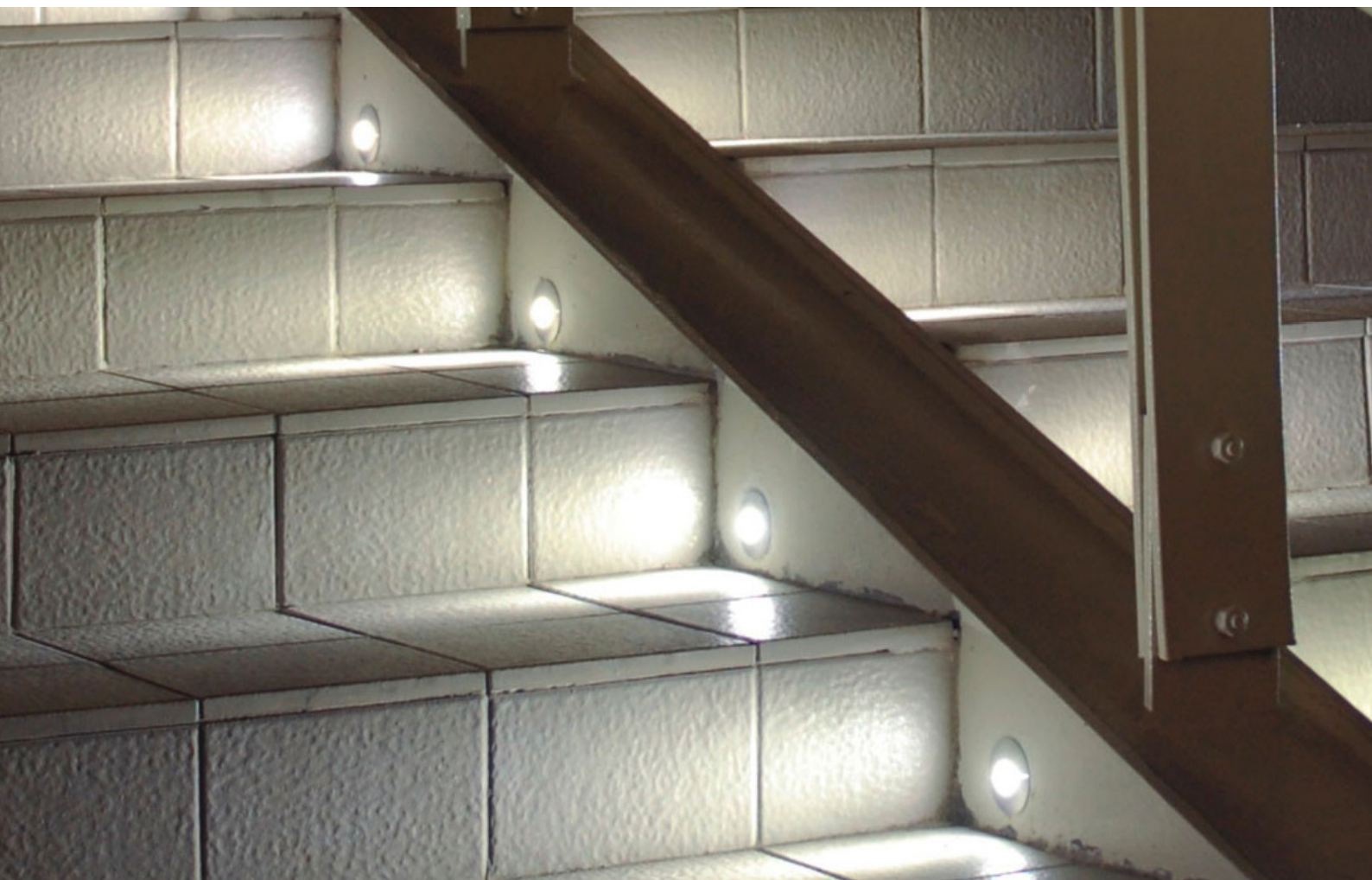


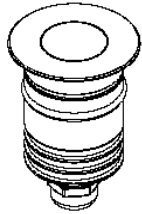
IG-40-30R



InGround LED Spot



Inground LED spot



- ✔ 2W Max
- ✔ IP67 for wet locations
- ✔ 50,000 hour lifetime
- ✔ CNC processed Aluminum housing
- ✔ 500Kg walkover
- ✔ Installation accessories supplied



SPECIFICATIONS

Power	1 LED x 1W (350mA) 1 LED x 2W (500mA)
Light Color	White: Warm, Neutral, Cool Color: Red, Green, Blue, Amber
White light CCT	3,000K 4,000K 6,000K
Lumen Output ¹	140lm 140lm 160lm - 1W 180lm 180lm 210lm - 2W
White light CRI ²	≥80 - Standard ≥90
Beam	5°, 15°, 25°, 45°, Wide (frosted)
Optics	20mm Optics Clear or frosted cover

Diameter	ø40
Installation cut off	ø31mm (without concrete box)
Height	51mm (without cable)
Weight	70g

Housing	Aluminum, tempered crystal glass cover
Housing color	Natural anodize coating
IP Rating	Wet locations - IP67
Operating Temp.	-20°C to 40°C
Cable	50cm Neoprene cable - Standard
Connectors	Open Wires
Accessories	B-30 - Concrete box (ø35mm x 80mm)

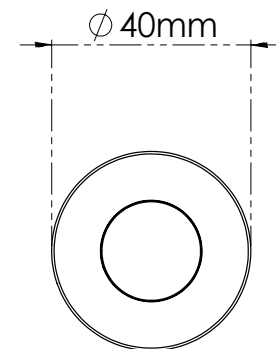
Extras	
Accessories	S-30 wood / plaster installation spring (12mm)
Cable	Custom cable length up to 50m
Power Supply	Constant Current
Control	On/Off 0-10V Triac DMX DALI

Notes:

- 1 LEDs have ±10% output tolerance in accordance to manufacturer specifications
- 2 CRI 90 version is available upon request only
- 3 Extras are not supplied by default and priced separately

DRAWINGS

TOP



SIDE

