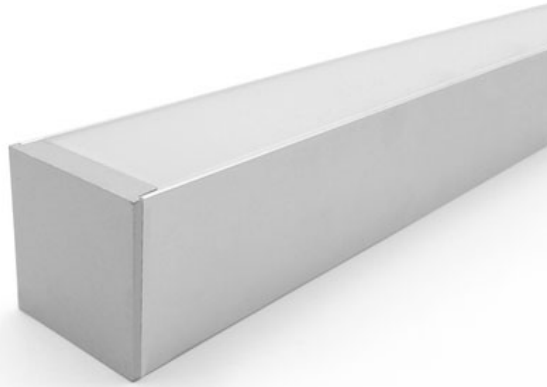


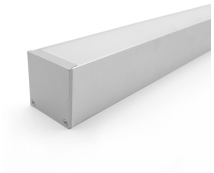
PR-35-35-H1



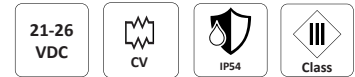
Linear LED Profile



Linear LED Profile



- ✔ 14.4W/m
- ✔ Customized unit length
- ✔ Seamless connection between units
- ✔ Dimmable and controllable
- ✔ Dry or damp location versions
- ✔ Mounting accessories supplied
- ✔ Risk Group 0
- ✔ RGB version is available



SPECIFICATIONS

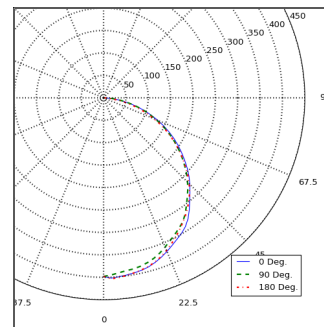
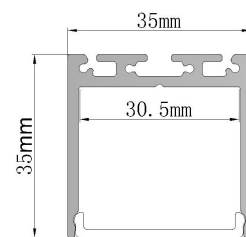
| | |
|------------------------------|--|
| Power | 14.4W/m |
| Light Color | White: Warm, Neutral, Cool ,  |
| White light CCT | 3,000K 4,000K 6,000K RGB+W |
| White light CRI ² | ≥80 - Standard ≥90 |
| Beam | 120° |
| Optics | Diffused Cover / Prismatic Cover |
| Uniformity | Complete uniformity |

| | |
|------------|-----------------------------|
| Dimensions | 35mm x35mm |
| Length | Veritable from 100 - 3000mm |
| Weight | 565g |

| | |
|-----------------|---|
| Housing | Aluminum Extrusion, PMMA cover |
| Housing color | Natural anodize coating |
| IP Rating | Dry locations - IP20 Damp locations - IP54 |
| Operating Temp. | -20°C to 40°C |
| Cable | 100mm 2 wire cable - Standard |
| Connectors | Power out - Open Wires Fixture to fixture - 2 pin plug |

| | |
|------------------------|-------------------------------------|
| Extras | |
| Accessories (supplied) | Mounting plates Suspension wires |
| Power supply | Constant voltage 24V |
| Control | On/Off 0-10V DALI DMX |

CROSS SECTION



LUMEN OUTPUT INFO

| CCT | Diffused Cover |
|--------|----------------|
| 3,000K | 1144 lm |
| 4,000K | 1257 lm |
| 6,000K | 1384 lm |

Output data refers to Edison 2835 LEDs
Total lumen output can vary in accordance to chosen power supply and connection scheme

Notes:

- 1 CRI 90 version is available upon request only
- 2 Extras are not supplied by default and priced separately